

The Pearsall Post Newsletter

Thursday 24th March 2022

Student Absence Line:
0437 482 159

Important Dates to Remember

- **EARLY CLOSE EVERY WEDNESDAY @ 2:30PM**
- **Recess & Lunch Time Changes for 2022**
Recess 10.40am - 11.40am
Lunch 1.15 - 1.40pm
- **Free Dress Last day of Term Fri 8th April (gold coin donation)**
- **Last day Term 1 Friday 8th April**
- **First day back Term 2 Tuesday 26th April**

Dear Parents and Caregivers,

I cannot praise our school community enough on the concerted effort in adhering to the Covid 19 protocols for schools. This combined effort has assisted in keeping classrooms open for teaching and learning – Well done Pearsall Primary School community!!

Parents and caregivers have been contacted with updated Department of Education Covid 19 information via Connect. Attached on page 3 is information regarding quarantining with a child who is identified as a close contact. Please use the Pearsall Primary School email address (pearsall.ps@education.wa.edu.au) to communicate the results of PCR or RAT tests.

Please continue to keep children who are unwell, at home. If a child becomes unwell at school, parents/carers will be contacted to collect their child from school. Thank you for your cooperation with this.

Kind Regards,
Gary Payne
Principal

2023 Kindergarten Enrolments - Open Monday 2nd May

Applications for children born between 1 July 2018 to 30 June 2019 will be taken from Monday 2nd of May. You can download an Application to Enrol form from our website. When lodging enrolment, a copy of the child's birth certificate, current immunisation records and proof of address (copy of utilities bill) are required. Places are limited and fill fast. For more information, please see our website. **Applications will only be accepted from Monday 2nd May.**



2022 Student Leadership Roles

It was a great pleasure for admin to present the badges to our 2022 student leaders. Congratulations to all our Student leaders.

Technology – Rylan, Zyla (DM7) George, Eva (DM5) Jaden, Zachary (DM6)

Lightning – Damian S, Sienna L

Lava – Lucy P, Aiden

Storm – Mitchell, Addison

Thunder – Damian R, Ebony

Lighthouse – Tiani

French – Ava T, Ava Mei, Kwee Leen

Green Team – Ella, Harshni, Adeline, Jayla

Science – Tiana, Ava S, Harvey, Dowoo

Library- Jet, Indie-Lee (DM7) Sienna M, Marley (DM5) Violette, Evie (DM6)

Music – Umi, Keenan, Kalan , Ashlyn



BUZ Leaders

Umi	Emily. P	Jayla
Tilly	Raina	Tia
Heidi	Addison	Jordan
Caitlyn	Kate	Sienna. L
Zach	Eva	Seth
Ava. T	Jaden	Selah
Indi-Lee	Lachlan	Joyllyn
Zyla	Violette	Tiani
Ashlyn. B	Maddison	Alyssa
Lily	Evie	Ella. L
Marley	Harshni	Nicholas. H
Chelsea	Lucy	Tiana

**NEW 2022
TIMETABLE**

8.25am	Classrooms Open
8.40am	Siren for start of day
10.40am	Recess
11.15am	End of Recess
1.15pm	Lunch
1.40pm	End of Lunch
3.00pm	School Day Ends

Please note:**2.30pm finish on****Wednesdays****Assemblies held****every 2nd****Thursday at****8.45am (On****Hold till further
notice)****LOST
PROPERTY**

-

A box of lost property is located at the rear of the Admin building.

Parents are welcome to check for items once gates open in the afternoons.

Please ensure all belongings are clearly labelled.

Naplan—Years 3 and 5

Students from years 3 and 5 will undertake NAPLAN Literacy and Numeracy testing online early in Term 2. Years 3 students will use school iPads for the testing; however, the Year 3 Writing Test will be completed as a pen and paper test. Teachers will be preparing the students for the online platform using the school devices. Practice tests are available on the public demonstration website: <https://www.nap.edu.au/online-assessment/public-demonstration-site> parents are encouraged to visit the site with their children and help them familiarise with the test features.

Students in year 5 who have their own devices as part of the schools BYOD programme will complete the testing on their own devices. In order for them to participate in NAPLAN, however, they will need to have the NAP Locked Down Browser downloaded. The app should be downloaded at home and is available for free in the Apple store at <http://apps.apple.com/au/app/nap-locked-down-browser/id1086807255>.

A national coordination practice test was conducted at 9am on Thursday 24th March . This is designed to test the connectivity capacity with a high volume of users at a school and system level. Please note that this practice testing does not contribute at all to students overall NAPLAN result.

Harmony Week

Pearsall Primary School students celebrated Harmony week this week, from the 21st of March till the 25th of March. There have been a variety of cultural activities to celebrate inclusivity and friendship as a part of harmony week celebrations . Students have researched their cultural backgrounds and displayed this information around the school.

**School Board**

Our school board is a voted or nominated collection of parents who support the strategic directions of Pearsall Primary School. The school will often present data which is reviewed to support the general directions of the school. The current school Board consist of: Theresa Cooper, Candice Dunne, Amber Cooper, Shannon O'Leary, Brett Thomas, Laura Marshall, Rachel Van Der Heiden, Steve Hough, Anjo Roach, Mandy Payne, Kia Zulberti, Kristy Beckett, Sunaina Dhanjal, Gary Payne, Renae Goosen, Matt Poppas, Jamie Kitin, Andrew Stewart and Casey Mcleod.

Whole School Assemblies

At present the Department of Health guidelines don't allow for parents to attend assemblies nor to have gatherings across year levels. We will be conducting our High Achiever Assembly on the Friday of week nine, this will be a little different to last years and you will be contacted if your child will be receiving an award.

P & C News

A Big Thankyou too **Woolworth Hocking** for their continued support. Our successful sausage sizzle held on the 18th of March was made possible by Woolworths Hocking donating sausages, buns and condiment's.



Payments

Please note that all payments to the school can be made by **EFTPOS** in the front office or **Direct Deposit**:
Acc: Pearsall Primary School
BSB: 066040
Acc: 19904146
 Put your child's initial, surname and reason e.g, J.Smith swimming.

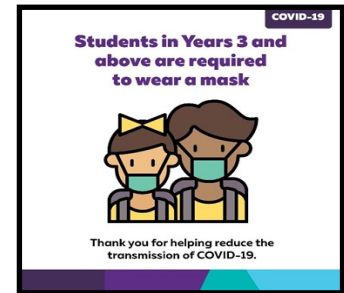
You can combine the amount if you have more than one child.

Please note, Eftpos and Direct Deposit are for school related payment and not for P&C payments.

Children's Masks

Our thanks to parents for your support with this. We want to reassure you that we are managing this in the most proactive manner possible. To help provide some respite for students, staff will ensure they have Crunch n Sip during class time. The wearing of masks for lengthy periods, particularly for the younger years, can be a bit difficult so we have encouraged staff to provide a quick mask break by going outside. Some parents have asked about recess and lunch breaks while in the playground. If their activity is passive i.e. Sitting outside library and reading, we would encourage mask wearing, but if students are actively playing, there is no need for a mask. The following links may be valuable for parents who have students in year3-6.

COVID FACT SHEET-Telethon Kids Institute
 WEARING A FACE MASK -TIPS-Raisingchildren. Net.au
 WHAT IS A CLOSE CONTACT-WA.gov.au
 You can also access the Education Department's website (www.education.wa.edu.au) regarding wellbeing and support in relation to the COVID 19 resources. Please don't hesitate to contact the school if you require support for your child's well being.




Please keep up to date with Connect. Please keep children at home if they have flu-like symptoms such as a temperature, fever, cough, runny nose, sneezing, vomiting, diarrhoea or any other symptoms. Any children that are symptomatic will be sent home.

Key Dates for close contacts – working out your isolation dates

The day of last exposure: Day 0 - End of quarantine date: end of day 7.
 Eg. If exposure day was Monday (day 0) - end of quarantine date is the end of the following Monday (day 7) .

House hold close contacts can return on day 8 if no symptoms.

Non-household asymptomatic close contacts may continue to attend school following a negative test on day one.




Department of Education
GOVERNMENT OF WESTERN AUSTRALIA

Shaping the future


Asymptomatic close contact protocols

Very high caseload settings


Students in school or early childcare, who have been identified as a close contact but are asymptomatic:




Can attend school, before school care and after school care



Can travel between home and school with family – avoid public transport unless no alternative available



Can attend school-based sporting, cultural training or school events at their school



Must isolate at all other times until 7 days has passed.

If students become unwell, they should stay at home and get tested.

These settings do not apply to students who are household close contacts – in this case, students will need to isolate for seven days and follow the regular close contact protocols.

education.wa.edu.au

Based on current public health advice as at 10 March 2022.



YEAR 7 - 2023 PARENT INFORMATION EVENING

General & Specialist
Enrolments



INFORMATION ON OUR:
GENERAL ENROLMENTS

SPECIALIST PROGRAMS

- Specialist Performing Arts Program (Dance, Drama & Music)
- Specialist AFL Program

HIGH PERFORMANCE PROGRAMS

- Instrumental Music
- Academic Extension
- Robotics & Coding

**LIVE ONLINE EVENT
7PM**

WEDNESDAY 30TH MARCH

You can view this online event on
Facebook or our College Website
<https://wanneroosc.wa.edu.au/>



Follow us on Facebook - Wanneroo
Secondary College

